



The London Resort Development Consent Order

BC080001

Environmental Statement Volume 3: Figures

Figure 12.43 Biodiversity Net Gain Assessment – Proposed Habitats

Document reference: 6.3.12.43

Revision: 00

December 2020

Planning Act 2008

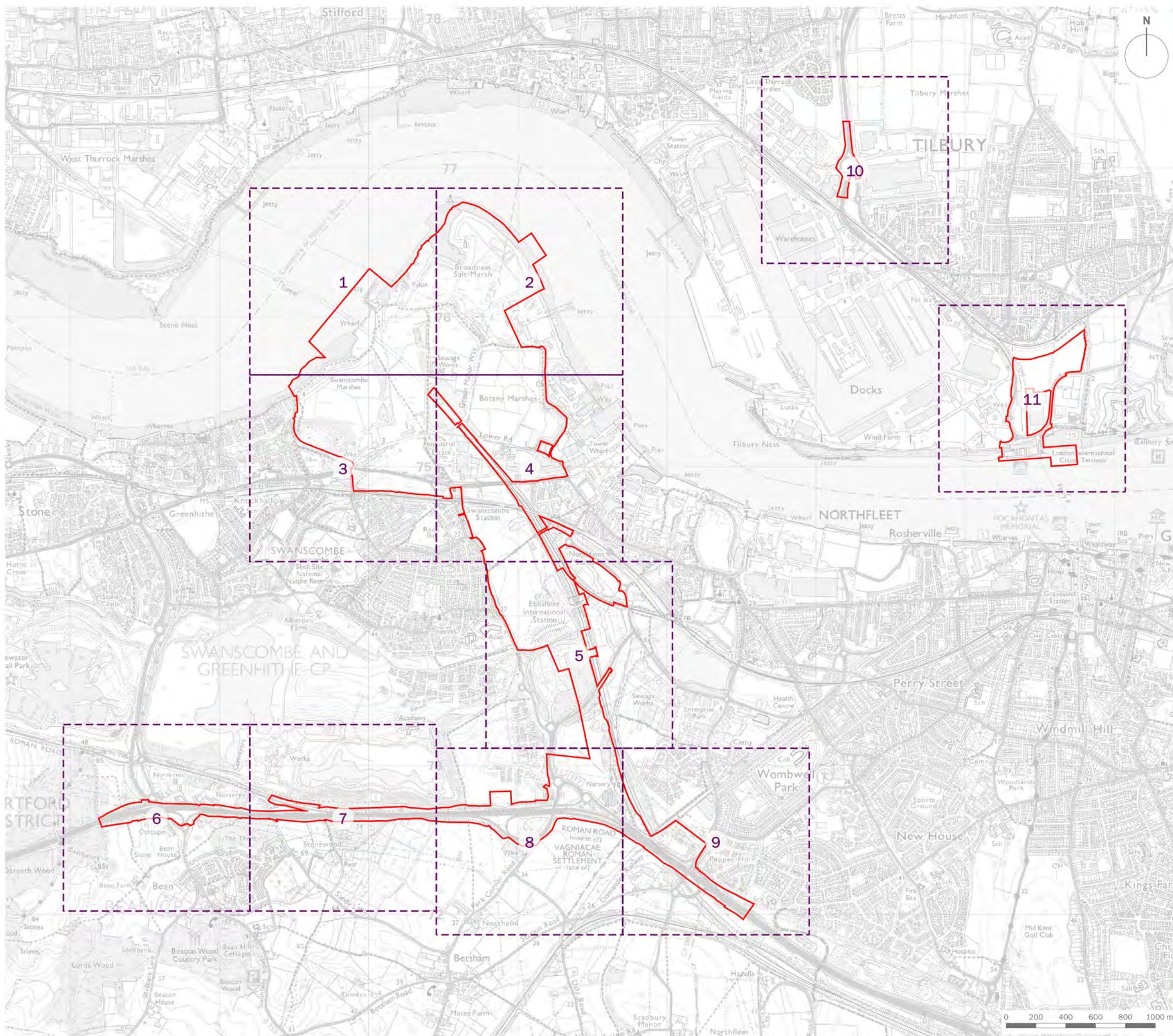
The Infrastructure Planning (Applications: Prescribed Forms and Procedure) Regulations 2009

Regulation 5(2)(a)

The Infrastructure Planning (Environmental Impact Assessment) Regulations 2017

Regulation 12(1)

[This page is intentionally left blank]



 Order Limits

client
London Resort Company Holdings Limited

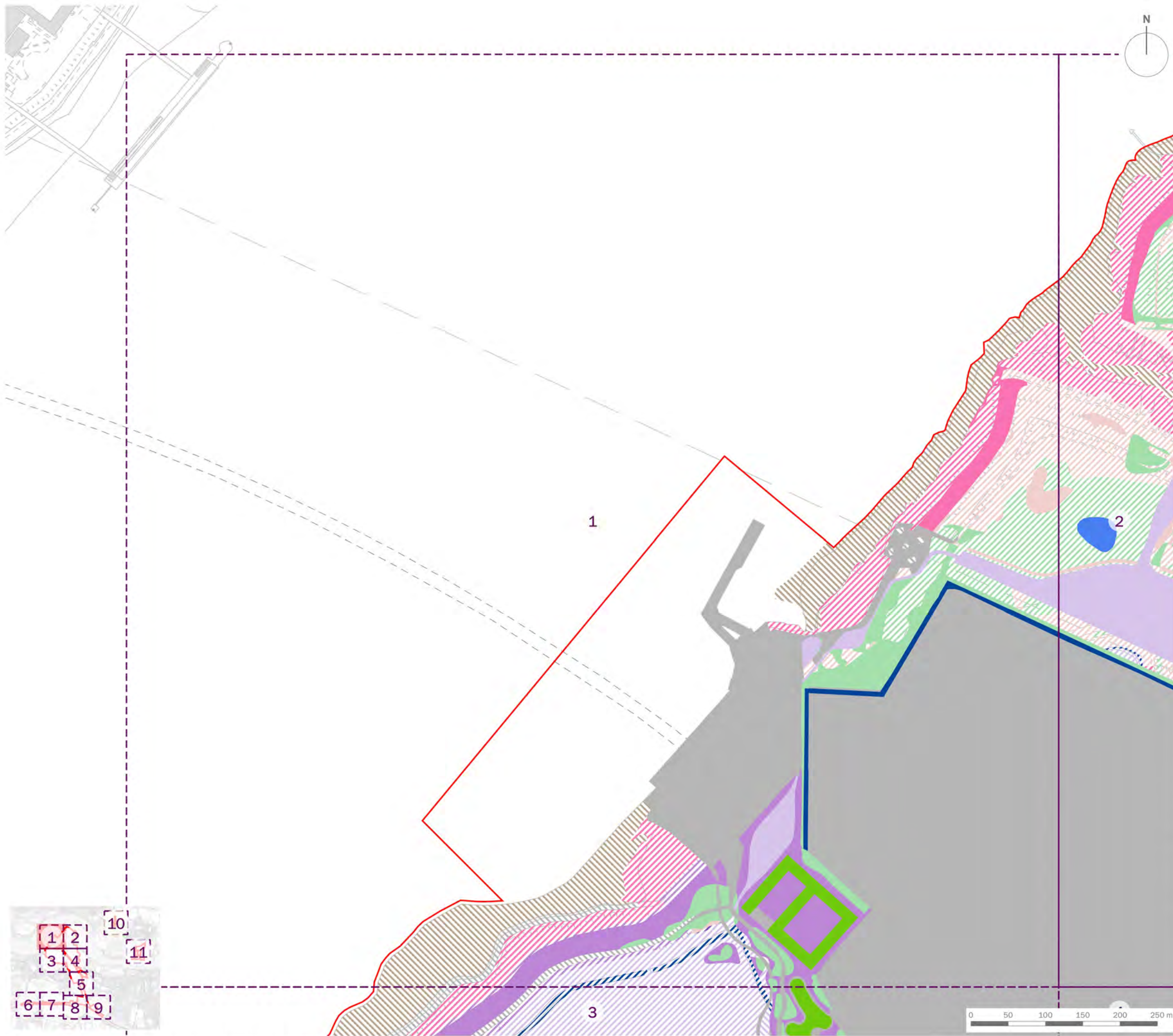
project title
The London Resort

drawing title
Figure 12.43: Biodiversity Net Gain Assessment - Proposed Habitats (Overview)

date **17 DECEMBER 2020** drawn by **GY**
drawing number **edp5988_d148b** checked **WC**
scale **1:25,000 @ A3** QA **JTF**



Registered office: 01285 740427 - www.edp-uk.co.uk - info@edp-uk.co.uk



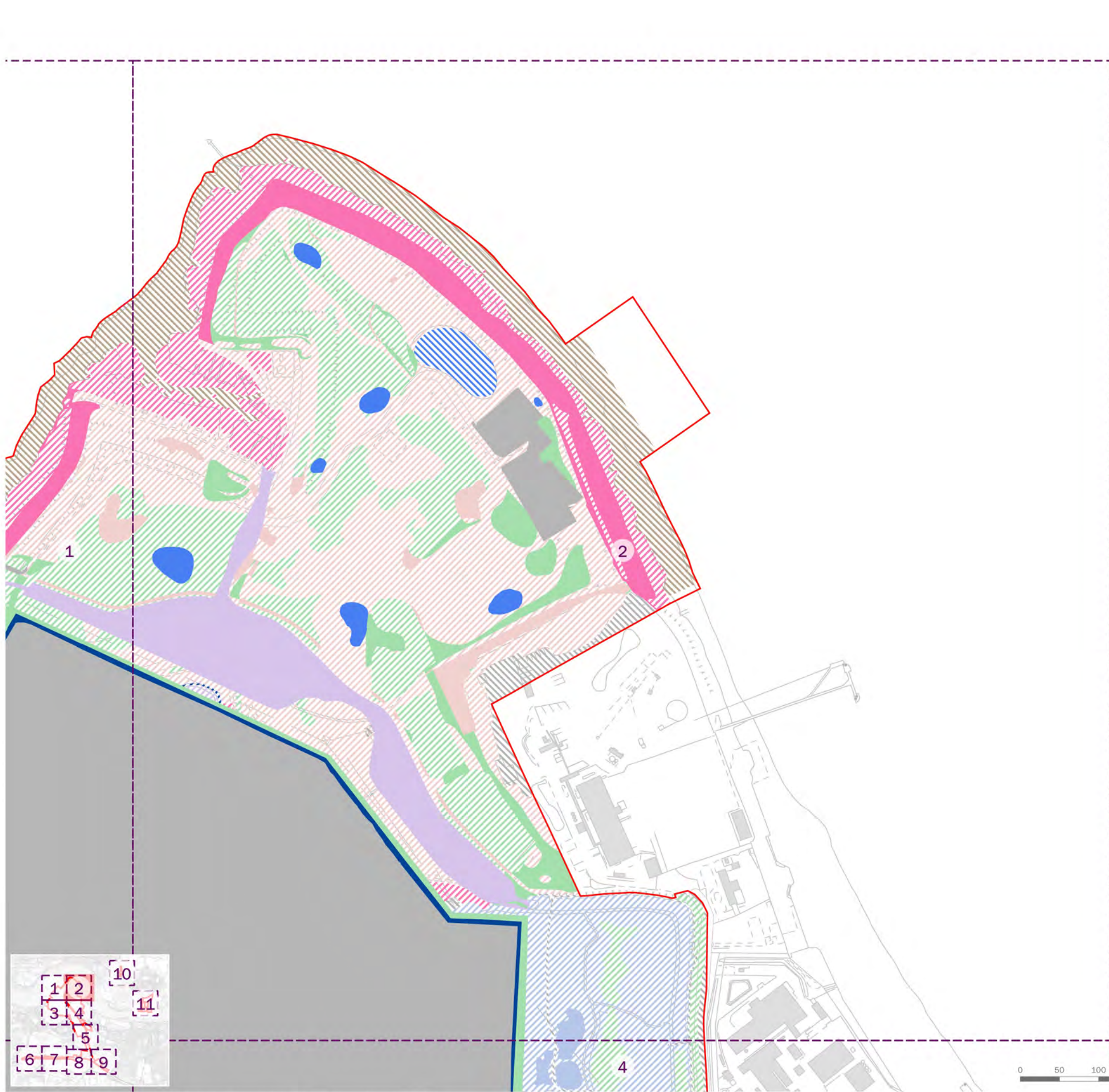
- Order Limits
- Retained Habitats**
- Reedbeds (0.68ha)
- Saltmarshes and Saline Reedbeds (0.01ha)
- Intertidal Sediment - Littoral Mud (9.58ha)
- Ditches (0.004ha)
- Developed Land; Sealed Surface (66.23ha)
- Retained and Enhanced Habitats**
- Mixed Scrub (19.26ha)
- Lowland Calcareous Grassland (0.01ha)
- Other Neutral Grassland (0.91ha)
- Reedbeds (11.23ha)
- Saltmarshes and Saline Reedbeds (7.18ha)
- Ditches (0.55ha)
- Open Mosaic Habitats on Previously Developed Land (13.67ha)
- New Habitats**
- Mixed Scrub (8.42ha)
- Other Neutral Grassland (21.74ha)
- Reedbeds (5.31ha)
- Saltmarshes and Saline Reedbeds (3.04ha)
- Ponds (Non- Priority Habitat) (0.63ha)
- Ditches (1.00ha)
- Open Mosaic Habitats on Previously Developed Land (3.49ha)
- Developed Land; Sealed Surface (118.74ha) 60% of total area entered as developed land; sealed surface, 20% as amenity grassland and 20% as other neutral grassland
- Extensive Green Roof (2.06ha)

client
London Resort Company Holdings Limited

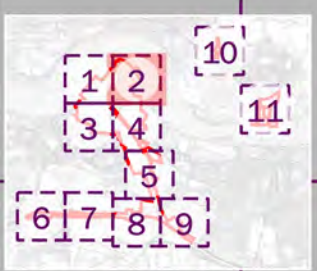
project title
The London Resort

drawing title
Figure 12.43: Biodiversity Net Gain Assessment - Proposed Habitats (Sheet 1 of 11)

date	17 DECEMBER 2020	drawn by	GY
drawing number	edp5988_d148b	checked	WC
scale	1:5,000 @ A3	QA	JTF



- Order Limits
- Retained Habitats**
- Saltmarshes and Saline Reedbeds (0.01ha)
- Intertidal Sediment - Littoral Mud (9.58ha)
- Ponds (Non-Priority Habitat) (0.56ha)
- Open Mosaic Habitats on Previously Developed Land (2.72ha)
- Developed Land; Sealed Surface (66.23ha)
- Retained and Enhanced Habitats**
- Mixed Scrub (19.26ha)
- Reedbeds (11.23ha)
- Saltmarshes and Saline Reedbeds (7.18ha)
- Floodplain Wetland Mosaic (CFGM) (9.91ha)
- Sustainable Urban Drainage Feature (0.003ha)
- Ditches (0.55ha)
- Open Mosaic Habitats on Previously Developed Land (13.67ha)
- New Habitats**
- Mixed Scrub (8.42ha)
- Other Neutral Grassland (21.74ha)
- Reedbeds (5.31ha)
- Saltmarshes and Saline Reedbeds (3.04ha)
- Floodplain Wetland Mosaic (CFGM) (2.67ha)
- Ponds (Non- Priority Habitat) (0.63ha)
- Ditches (1.00ha)
- Open Mosaic Habitats on Previously Developed Land (3.49ha)
- Developed Land; Sealed Surface (118.74ha) 60% of total area entered as developed land; sealed surface, 20% as amenity grassland and 20% as other neutral grassland

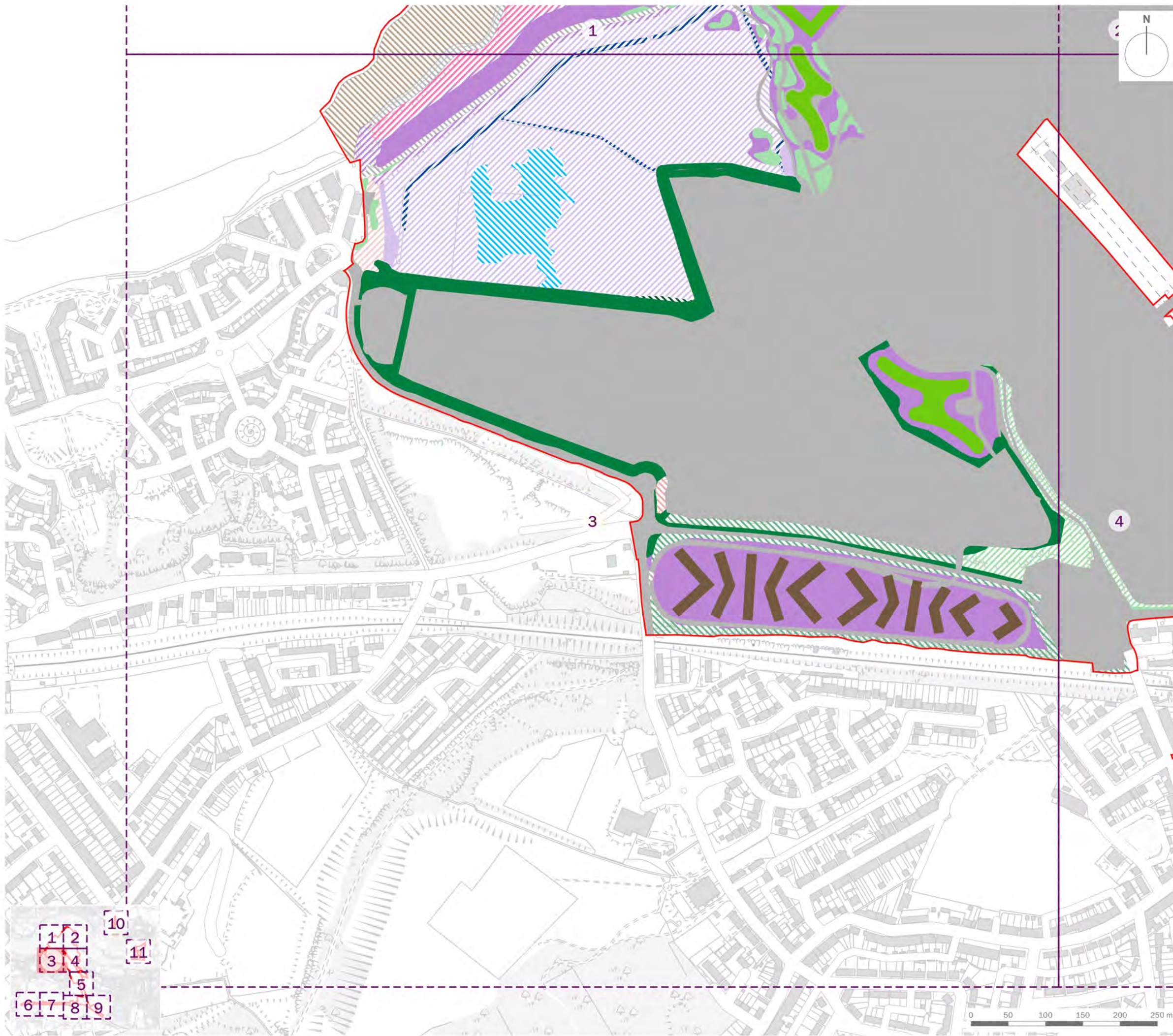


client
London Resort Company Holdings Limited

project title
The London Resort

drawing title
Figure 12.43: Biodiversity Net Gain Assessment - Proposed Habitats (Sheet 2 of 11)

date	17 DECEMBER 2020	drawn by	GY
drawing number	edp5988_d148b	checked	WC
scale	1:5,000 @ A3	QA	JTF



- Order Limits
- Retained Habitats**
- Lowland Mixed Deciduous Woodland (17.36ha)
- Mixed Scrub (Moderate) (19.33ha)
- Reedbeds (0.68ha)
- Intertidal Sediment - Littoral Mud (9.58ha)
- Ponds (Priority Habitat) (1.44ha)
- Ditches (0.004ha)
- Open Mosaic Habitats on Previously Developed Land (2.72ha)
- Developed Land; Sealed Surface (66.23ha)
- Retained and Enhanced Habitats**
- Mixed Scrub (19.26ha)
- Other Neutral Grassland (0.91ha)
- Reedbeds (11.23ha)
- Saltmarshes and Saline Reedbeds (7.18ha)
- Ditches (0.55ha)
- Open Mosaic Habitats on Previously Developed Land (13.67ha)
- New Habitats**
- Other Woodland; Broadleaved (3.40ha)
- Mixed Scrub (8.42ha)
- Other Neutral Grassland (21.74ha)
- Reedbeds (5.31ha)
- Developed Land; Sealed Surface (118.74ha) 60% of total area entered as developed land; sealed surface, 20% as amenity grassland and 20% as other neutral grassland
- Extensive Green Roof (2.06ha)
- Brown Roof (1.33ha)

client
London Resort Company Holdings Limited

project title
The London Resort

drawing title
Figure 12.43: Biodiversity Net Gain Assessment - Proposed Habitats (Sheet 3 of 11)

date	17 DECEMBER 2020	drawn by	GY
drawing number	edp5988_d148b	checked	WC
scale	1:5,000 @ A3	QA	JTF

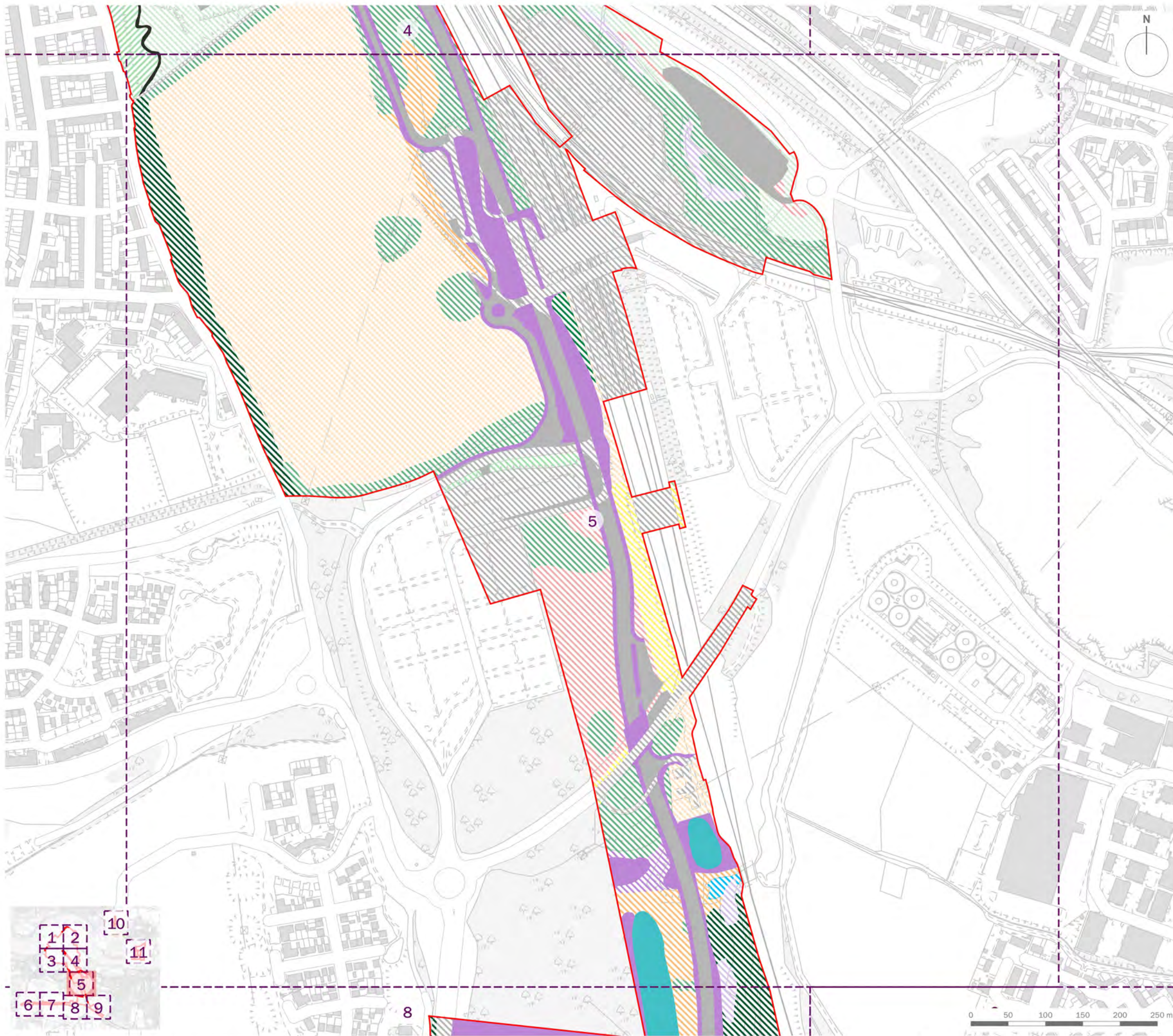


client
London Resort Company Holdings Limited

project title
The London Resort

drawing title
Figure 12.43: Biodiversity Net Gain Assessment - Proposed Habitats (Sheet 4 of 11)

date	17 DECEMBER 2020	drawn by	GY
drawing number	edp5988_d148b	checked	WC
scale	1:5,000 @ A3	QA	JTF



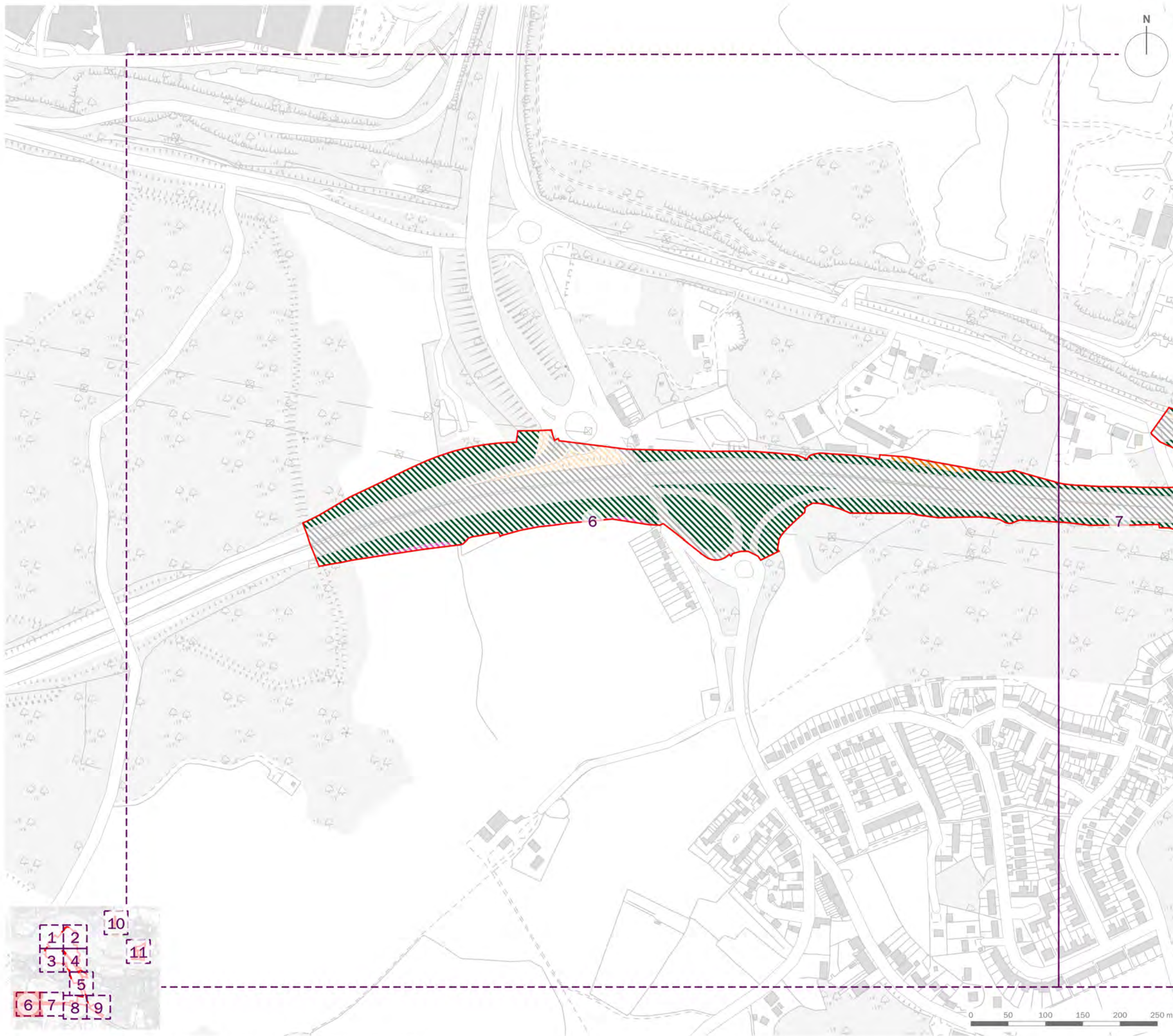
- Order Limits
- Retained Habitats**
- Lowland Mixed Deciduous Woodland (17.36ha)
- Other Woodland; Broadleaved (3.36ha)
- Mixed Scrub (Moderate) (19.33ha)
- Mixed Scrub (Fairly Poor) (0.24ha)
- Mixed Scrub (Poor) (3.86ha)
- Modified Grassland (Moderate) (25.74ha)
- Modified Grassland (Fairly Poor) (2.39ha) 50% of 'fairly poor' grassland added to 'mixed scrub' to account for scattered scrub cover
- Other Neutral Grassland (0.28ha)
- Amenity (3.12ha)
- Reedbeds (0.68ha)
- Ponds (Priority Habitat) (1.44ha)
- Open Mosaic Habitats on Previously Developed Land (2.72ha)
- Developed Land; Sealed Surface (66.23ha)
- Retained and Enhanced Habitats**
- Mixed Scrub (19.26ha)
- Saltmarshes and Saline Reedbeds (7.18ha)
- New Habitats**
- Other Neutral Grassland (21.74ha)
- Sustainable Urban Drainage Feature (1.90ha)
- Vacant/Derelict Land/Bareground (0.52ha)
- Developed Land; Sealed Surface (118.74ha) 60% of total area entered as developed land; sealed surface, 20% as amenity grassland and 20% as other neutral grassland

client
London Resort Company Holdings Limited

project title
The London Resort

drawing title
Figure 12.43: Biodiversity Net Gain Assessment - Proposed Habitats (Sheet 5 of 11)

date	17 DECEMBER 2020	drawn by	GY
drawing number	edp5988_d148b	checked	WC
scale	1:5,000 @ A3	QA	JTF



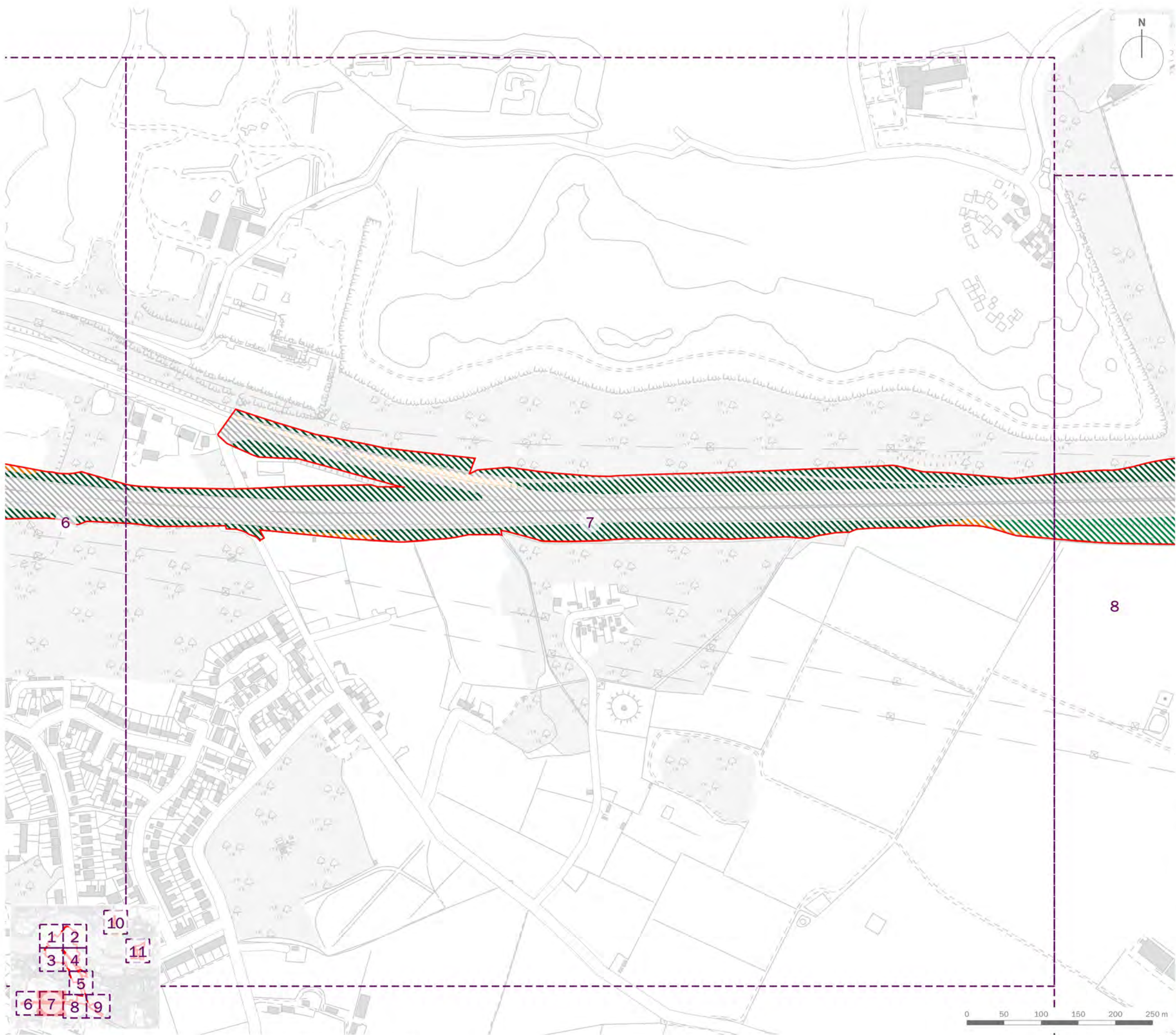
- Order Limits
- Retained Habitats**
- Lowland Mixed Deciduous Woodland (17.36ha)
- Modified Grassland (Moderate) (25.74ha)
- Modified Grassland (Poor) (0.45ha)
- Cereal Crop (0.16ha)
- Developed Land; Sealed Surface (66.23ha)

client
London Resort Company Holdings Limited

project title
The London Resort

drawing title
Figure 12.43: Biodiversity Net Gain Assessment - Proposed Habitats (Sheet 6 of 11)

date	17 DECEMBER 2020	drawn by	GY
drawing number	edp5988_d148b	checked	WC
scale	1:5,000 @ A3	QA	JTF



- Order Limits
- Retained Habitats**
- Lowland Mixed Deciduous Woodland (17.36ha)
- Other Woodland; Broadleaved (3.36ha)
- Modified Grassland (Moderate) (25.74ha)
- Modified Grassland (Poor) (0.45ha)
- Developed Land; Sealed Surface (66.23ha)

client	London Resort Company Holdings Limited		
project title	The London Resort		
drawing title	Figure 12.43: Biodiversity Net Gain Assessment - Proposed Habitats (Sheet 7 of 11)		
date	17 DECEMBER 2020	drawn by	GY
drawing number	edp5988_d148b	checked	WC
scale	1:5,000 @ A3	QA	JTF



Registered office: 01285 740427 · www.edp-uk.co.uk · info@edp-uk.co.uk



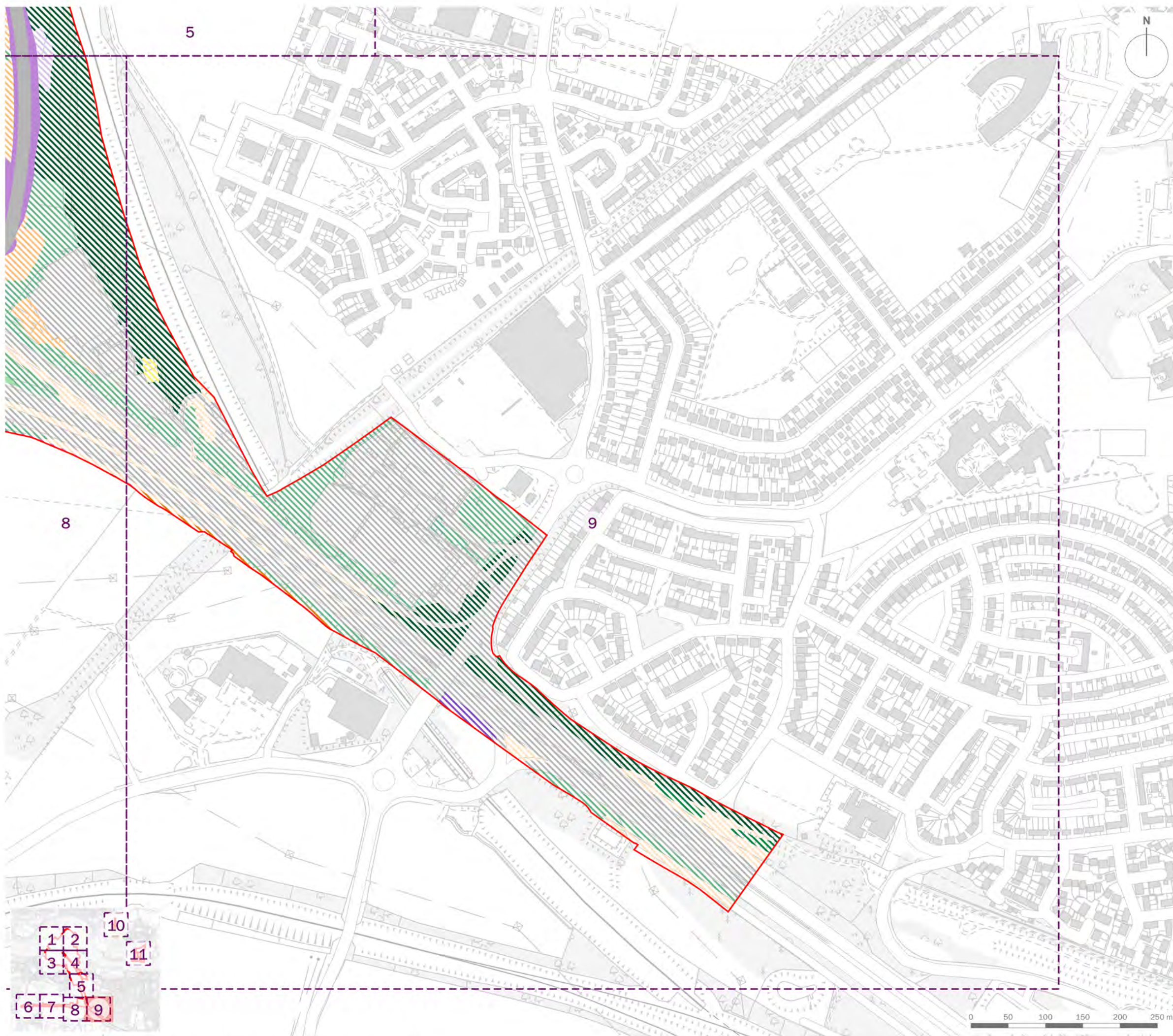
- Order Limits
- Retained Habitats**
- Lowland Mixed Deciduous Woodland (17.36ha)
- Other Woodland; Broadleaved (3.36ha)
- Mixed Scrub (Moderate) (19.33ha)
- Modified Grassland (Moderate) (25.74ha)
- Modified Grassland (Fairly Poor) (2.39ha) 50% of 'fairly poor' grassland added to 'mixed scrub' to account for scattered scrub cover
- Modified Grassland (Poor) (0.45ha)
- Cereal Crop (0.16ha)
- Amenity (3.12ha)
- Reedbeds (0.68ha)
- Developed Land; Sealed Surface (66.23ha)
- New Habitats**
- Mixed Scrub (8.42ha)
- Other Neutral Grassland (21.74ha)
- Sustainable Urban Drainage Feature (1.90ha)
- Developed Land; Sealed Surface (118.74ha) 60% of total area entered as developed land; sealed surface, 20% as amenity grassland and 20% as other neutral grassland

client
London Resort Company Holdings Limited

project title
The London Resort

drawing title
Figure 12.43: Biodiversity Net Gain Assessment - Proposed Habitats (Sheet 8 of 11)

date	17 DECEMBER 2020	drawn by	GY
drawing number	edp5988_d148b	checked	WC
scale	1:5,000 @ A3	QA	JTF



- Order Limits**
- Retained Habitats**
- Lowland Mixed Deciduous Woodland (17.36ha)
 - Other Woodland; Broadleaved (3.36ha)
 - Mixed Scrub (Moderate) (19.33ha)
 - Modified Grassland (Moderate) (25.74ha)
 - Modified Grassland (Fairly Poor) (2.39ha) 50% of 'fairly poor' grassland added to 'mixed scrub' to account for scattered scrub cover
 - Modified Grassland (Poor) (0.45ha)
 - Lowland Calcareous Grassland (Moderate) (0.15ha)
 - Cereal Crop (0.16ha)
 - Amenity (3.12ha)
 - Reedbeds (0.68ha)
 - Developed Land; Sealed Surface (66.23ha)
- New Habitats**
- Mixed Scrub (8.42ha)
 - Other Neutral Grassland (21.74ha)
 - Developed Land; Sealed Surface (118.74ha) 60% of total area entered as developed land; sealed surface, 20% as amenity grassland and 20% as other neutral grassland

client
London Resort Company Holdings Limited

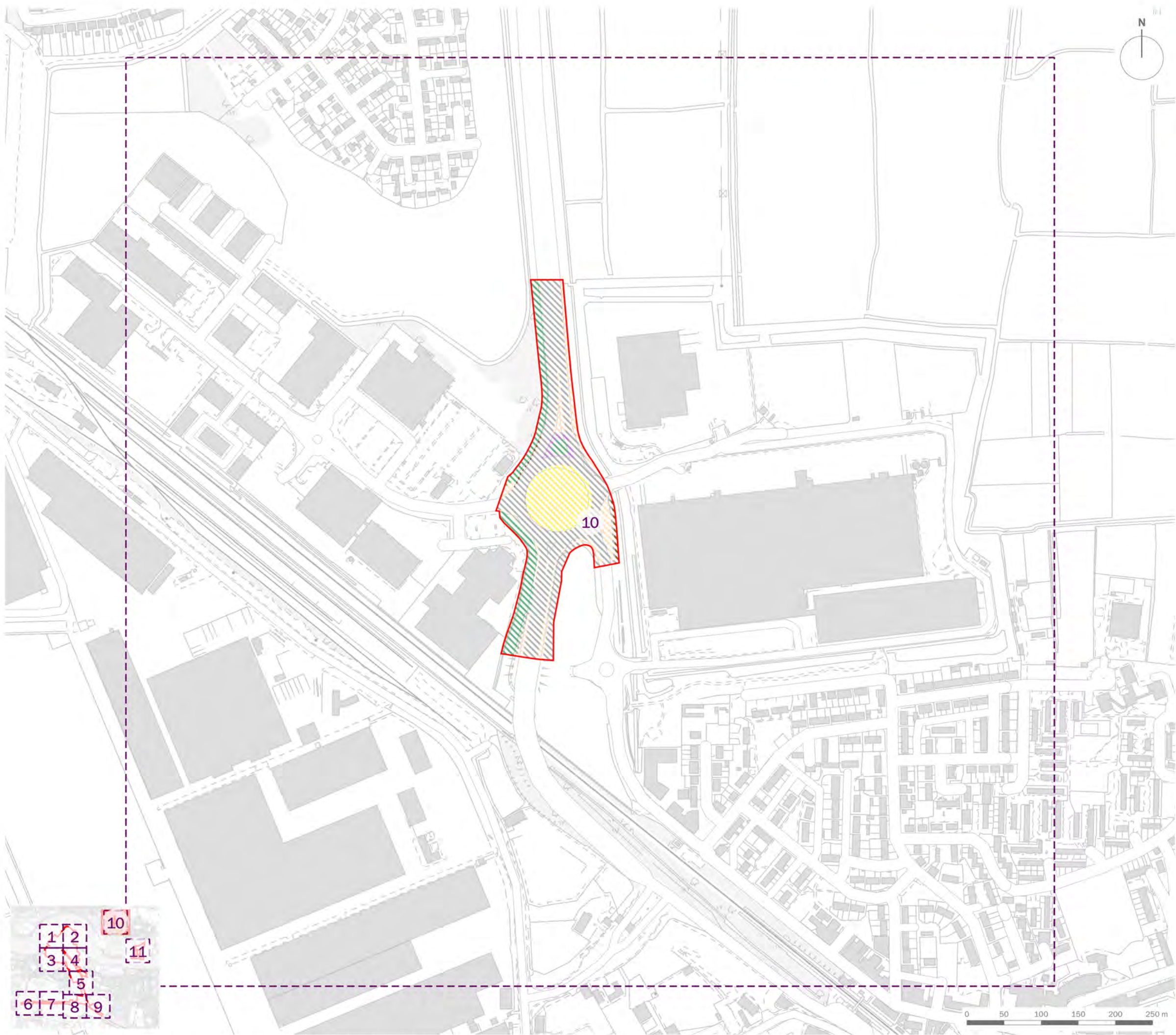
project title
The London Resort

drawing title
Figure 12.43: Biodiversity Net Gain Assessment - Proposed Habitats (Sheet 9 of 11)

date	17 DECEMBER 2020	drawn by	GY
drawing number	edp5988_d148b	checked	WC
scale	1:5,000 @ A3	QA	JTF



Registered office: 01285 740427 · www.edp-uk.co.uk · info@edp-uk.co.uk



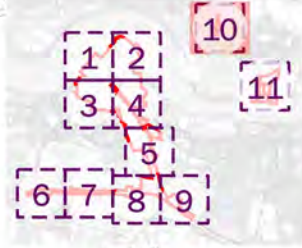
- Order Limits
- Retained Habitats**
- Mixed Scrub (Moderate) (19.33ha)
- Modified Grassland (Moderate) (25.74ha)
- Other Neutral Grassland (0.28ha)
- Amenity (3.12ha)
- Ruderal/Ephemeral (0.05ha)
- Developed Land; Sealed Surface (66.23ha)

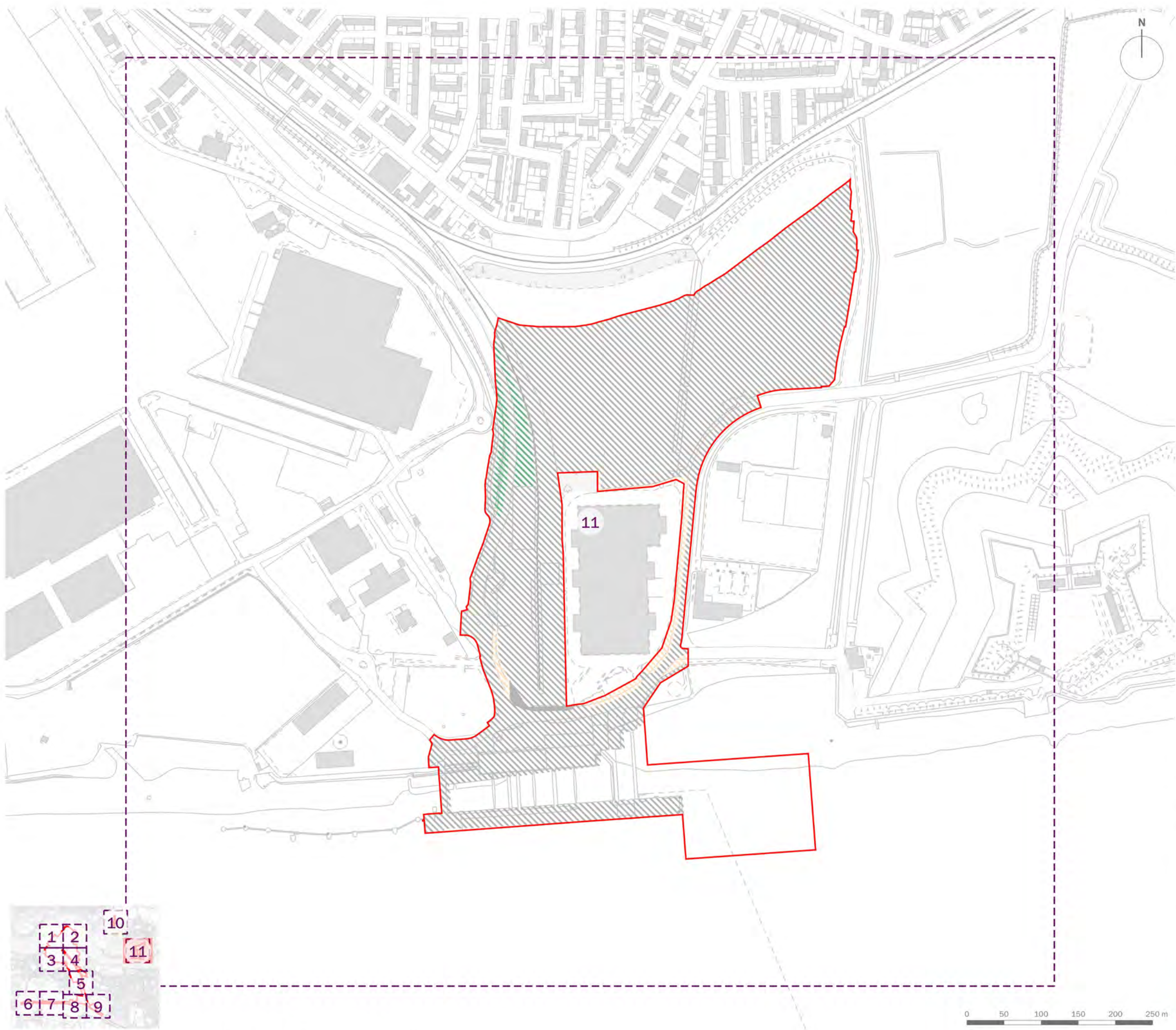
client
London Resort Company Holdings Limited

project title
The London Resort

drawing title
Figure 12.43: Biodiversity Net Gain Assessment - Proposed Habitats (Sheet 10 of 11)

date	17 DECEMBER 2020	drawn by	GY
drawing number	edp5988_d148b	checked	WC
scale	1:5,000 @ A3	QA	JTF





- Order Limits
- Retained Habitats**
- Mixed Scrub (Moderate) (19.33ha)
- Modified Grassland (Moderate) (25.74ha)
- Developed Land; Sealed Surface (66.23ha)
- New Habitats**
- Developed Land; Sealed Surface (118.74ha) 60% of total area entered as developed land; sealed surface, 20% as amenity grassland and 20% as other neutral grassland

client
London Resort Company Holdings Limited

project title
The London Resort

drawing title
Figure 12.43: Biodiversity Net Gain Assessment - Proposed Habitats (Sheet 11 of 11)

date	17 DECEMBER 2020	drawn by	GY
drawing number	edp5988_d148b	checked	WC
scale	1:5,000 @ A3	QA	JTF